



Connect to the World

Founded in 1996, Weipu is one of the leading waterproof connector manufacturers in China. We have R&D professionals, up-to-date machinery, a fully equipped in-house testing lab and a customer-focused quality management system in accordance with ISO 9001. Weipu operates in compliance with the highest industry standards with certifications of RoHs, CE, CSA, and UL concerning quality, safety and sustainability.

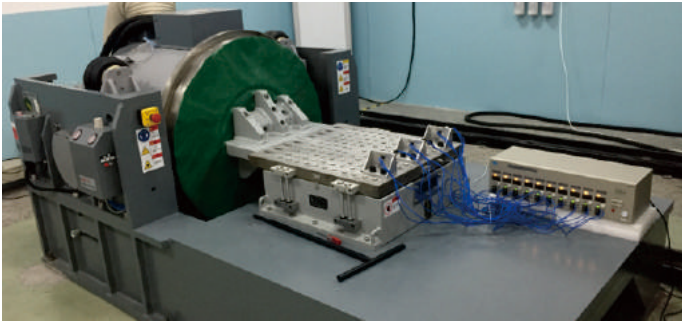
Specialised in circular waterproof connectors, we offer push-pull, threaded and bayonet connectors, ranging from 3A to 400A, 2pin to 61pin, and IP44 to IP68, which can be applied to a wide variety of industrial applications operating in challenging environments.



Workshop building



In-house Test Lab Equipment



Vibration Test Equipment



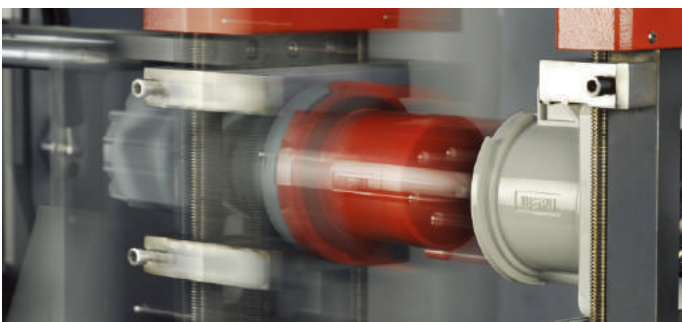
Electric Current Break Test Equipment



Optical Comparator



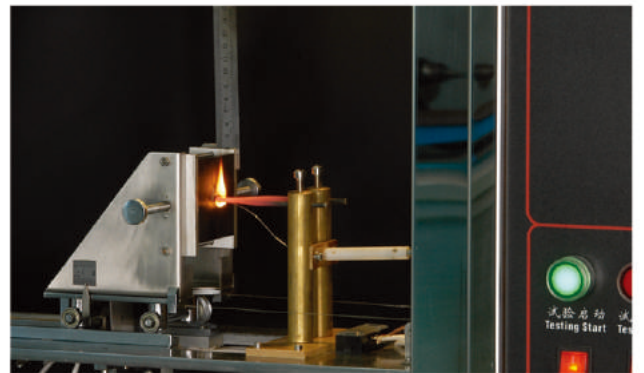
Waterproof IP Rating Test Chamber



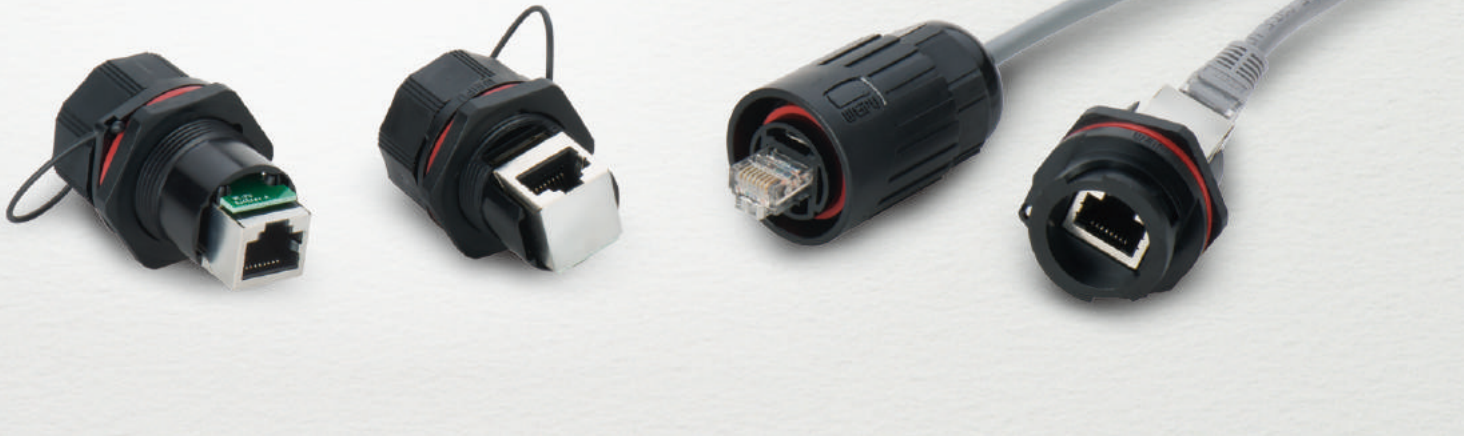
Mating Cycle Life Time Test Machine



Accurate Size Test Equipment

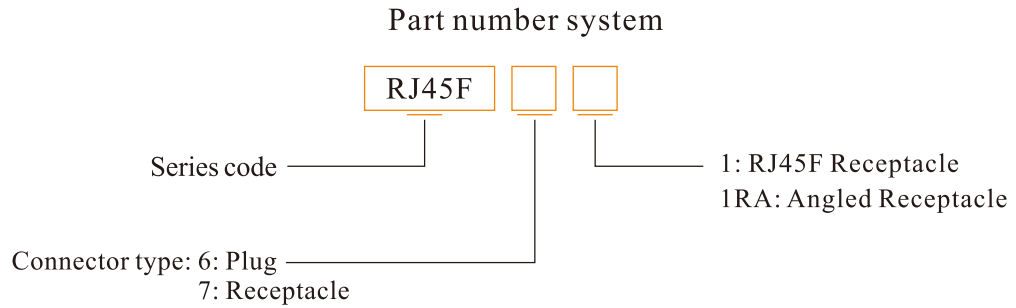


IP 67



● **RJ45F Series IP67**

RJ45F connector is used to connect standard Ethernet Class D /Cat.5e and Class E/cat 6 (10 Base T , 100 base TX , 1000 Base T net works) in outdoor or water proof harsh working environment . no need soldering , easy to connect , it is widely use in communications , LED boards , security monitoring , automation control etc.



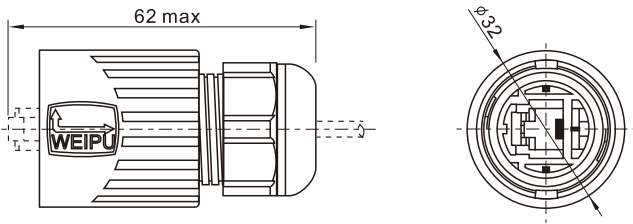
Material and spec

Coupling	Bayonet
Shell material	PC, fire resistance: V-0
IP rating	IP67
Cable out diameter range	I: 5-6mm, II: 6-7mm
Mating cycle	500
Temperature range	-40℃~+85℃

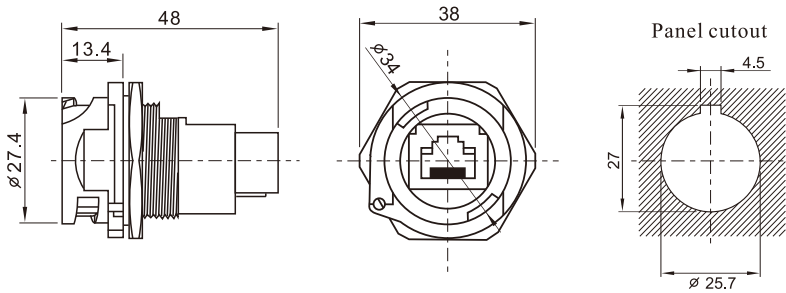
IP 67



- RJ45F plug: RJ45F6 — Cable outer diameter
I: 5-6mm, II: 6-7mm



- RJ45F Receptacle: RJ45F71



- Angled Receptacle: RJ45F71RA

