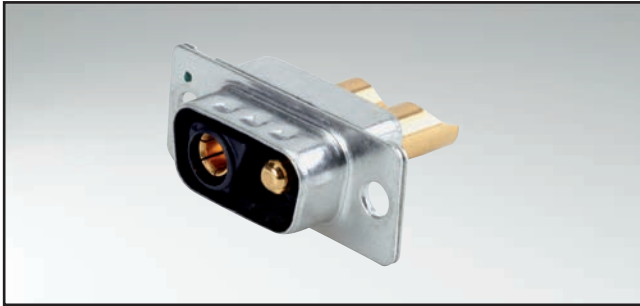


C-FILTER COMBINATION D-SUB 2W2C

Lötkelch – gedrehte Kontakte – für Kabel AWG 8-20

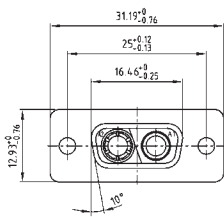


RoHS compliant – UL listed, File No.: E228329

BESCHREIBUNG

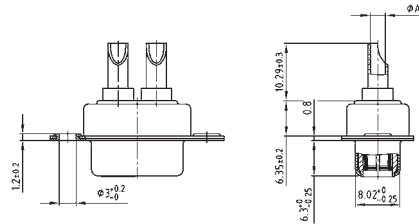
- codierte Ausführung = 1 Stift- und 1 Buchsenkontakt
- 707 VDC (andere DWV auf Anfrage)
- Montagearten:
 - mit Durchgangsloch Ø 3 mm
 - mit Innengewinde 4-40 UNC oder M3
- Gütestufe 3 (auch in Gütestufe 1 lieferbar)
- Gehäuse: Stahl verzinkt

BUCHSENLEISTE

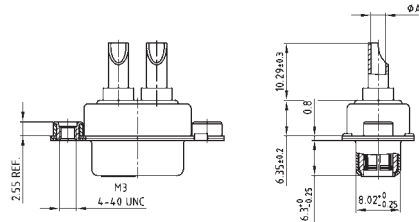


Termination Code	Current Rating	Wire Size	Ø A
41	10A	AWG 16-20	1.80
42	20A	AWG 12-14	2.70
43	30A	AWG 10-12	3.50
44	40A	AWG 8-10	4.80

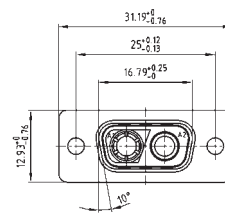
Montageart: Durchgangsloch



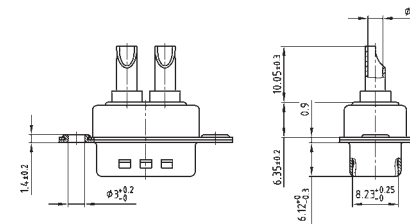
Montageart: Innengewinde



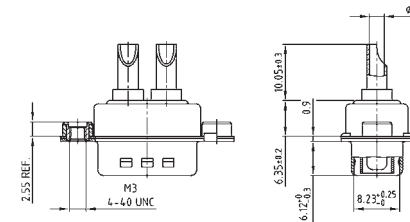
STIFTLISTE



Montageart: Durchgangsloch



Montageart: Innengewinde



BESTELLDATEN

BUCHSENLEISTE				
Typ	Montageart	AWG	Kapazität	Bestellnummer
2W2C	Durchgangsloch	16-20	47 nF	2F2CSA 22 S41A10X
2W2C	Durchgangsloch	12-14	47 nF	2F2CSA 22 S42A10X
2W2C	Durchgangsloch	10-12	47 nF	2F2CSA 22 S43A10X
2W2C	Durchgangsloch	8-10	47 nF	2F2CSA 22 S44A10X
2W2C	Innengewinde 4-40 UNC	16-20	47 nF	2F2CSA 22 S41A30X
2W2C	Innengewinde 4-40 UNC	12-14	47 nF	2F2CSA 22 S42A30X
2W2C	Innengewinde 4-40 UNC	10-12	47 nF	2F2CSA 22 S43A30X
2W2C	Innengewinde 4-40 UNC	8-10	47 nF	2F2CSA 22 S44A30X
2W2C	Innengewinde M3	16-20	47 nF	2F2CSA 22 S41A20X
2W2C	Innengewinde M3	12-14	47 nF	2F2CSA 22 S42A20X
2W2C	Innengewinde M3	10-12	47 nF	2F2CSA 22 S43A20X
2W2C	Innengewinde M3	8-10	47 nF	2F2CSA 22 S44A20X

STIFTLISTE				
Typ	Montageart	AWG	Kapazität	Bestellnummer
2W2C	Durchgangsloch	16-20	47 nF	2F2CPA 22 S41A10X
2W2C	Durchgangsloch	12-14	47 nF	2F2CPA 22 S42A10X
2W2C	Durchgangsloch	10-12	47 nF	2F2CPA 22 S43A10X
2W2C	Durchgangsloch	8-10	47 nF	2F2CPA 22 S44A10X
2W2C	Innengewinde 4-40 UNC	16-20	47 nF	2F2CPA 22 S41A30X
2W2C	Innengewinde 4-40 UNC	12-14	47 nF	2F2CPA 22 S42A30X
2W2C	Innengewinde 4-40 UNC	10-12	47 nF	2F2CPA 22 S43A30X
2W2C	Innengewinde 4-40 UNC	8-10	47 nF	2F2CPA 22 S44A30X
2W2C	Innengewinde M3	16-20	47 nF	2F2CPA 22 S41A20X
2W2C	Innengewinde M3	12-14	47 nF	2F2CPA 22 S42A20X
2W2C	Innengewinde M3	10-12	47 nF	2F2CPA 22 S43A20X
2W2C	Innengewinde M3	8-10	47 nF	2F2CPA 22 S44A20X

Für andere C-Filterkapazitäten bitte rot unterlegte Ziffern in der Bestellnummer austauschen.

Kapazitätswerte	Bestellcode
100 nF	28
47 nF	22
12 nF	14
10 nF	12
5 nF	08
1.3 nF	05