



Emboss Tape

ZIF
TYPE



- ## Standards

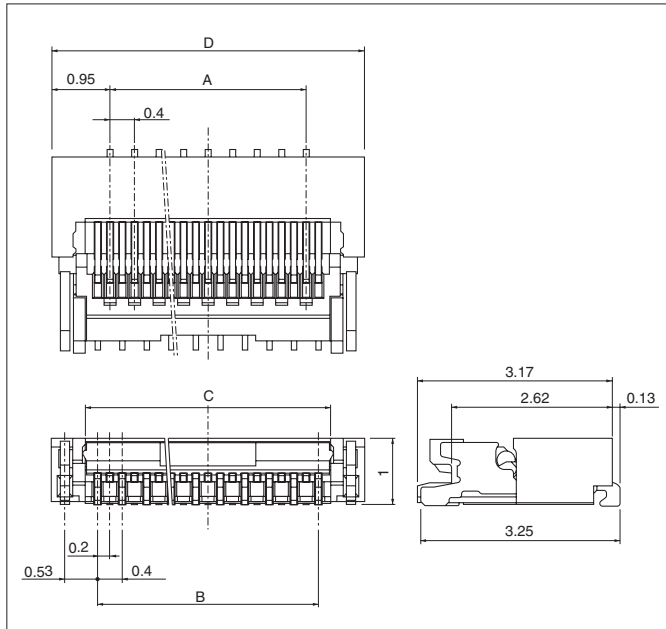
CSA Certified LR 20812

Technical drawing of a mechanical part, likely a valve or actuator component, showing a cross-section. The drawing includes dimensions: 3.17 (overall length) and 0.13 (thickness of the base plate).

1 **JST**

FVXS CONNECTOR

Connector



Circuits	Model No.	Dimensions (mm)				Q'ty / reel
		A	B	C	D	
51	51FVXS-RSM1-GAN-TF	9.6	10.0	10.4	11.5	5,000

Material and Finish

Socket housing: Heat resisting resin, UL94V-0

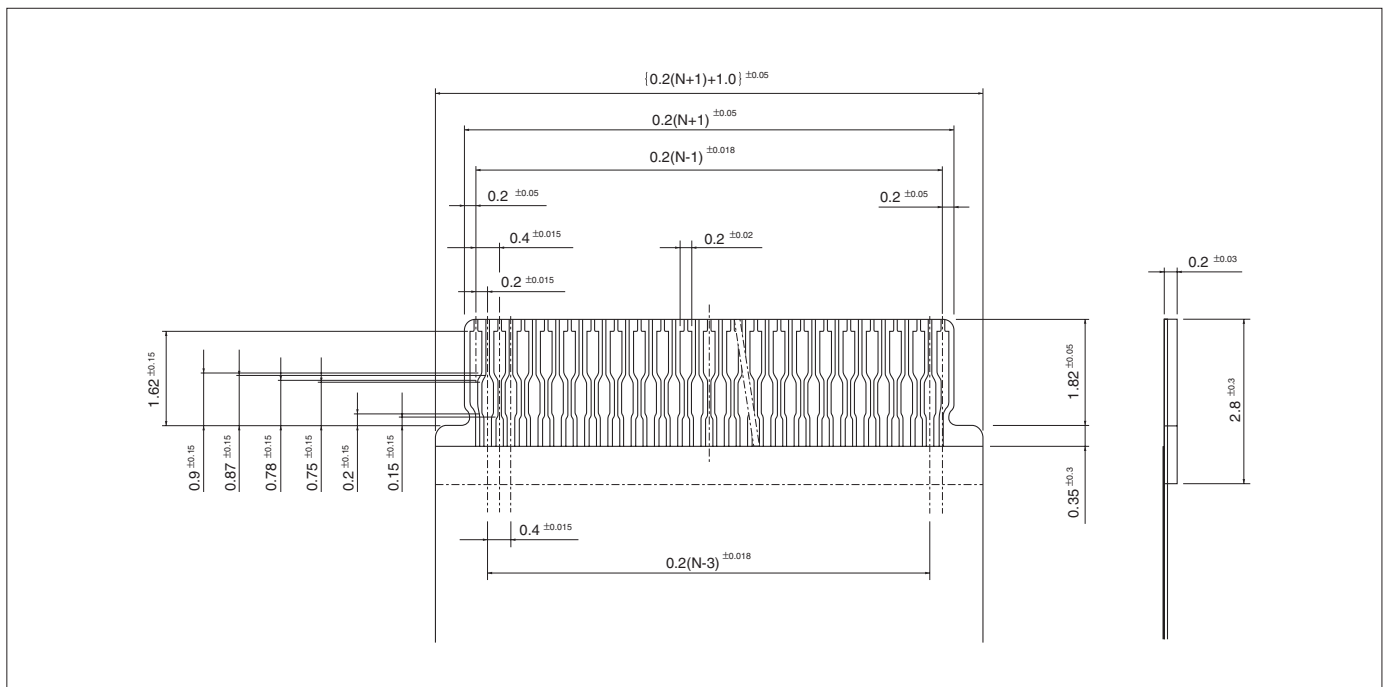
Cover housing: Heat resisting resin, UL94V-0

Contact: Copper alloy, nickel-undercoated, gold-plated (nickel-stripe)

Solder tab: Copper alloy, copper-undercoated, tin-plated (reflow treatment)

RoHS compliance This product displays (LF)(SN) on a label.

Lead section dimensions of FPC



Note: N --- Number of circuits